

## TruPrint 1000

### Compact and robust 3D printing

05

#### **Innovative service solutions and international support**

For detailed and fast support

01

#### **Easy and intuitive handling**

For a quick mastering of the technology

02

#### **High processing speed thanks to the innovative recoating system**

For rapid build part production

03

#### **Mobile operation and monitoring**

For an optimal machine overview

04

#### **Maximum productivity**

For up to 80% more parts per unit time  
with the multilaser option



## Laser metal fusion for complex metallic components.

The TruPrint 1000 produces components of almost any geometrical shape. Even complex shapes can be easily and rapidly transformed from the CAD drawing into a real component – and in the best quality.

Use the TruPrint 1000 for metallic 3D printing of small industrial parts and series. Adapt your TruPrint machine to your industry and application using our industry-specific optional packages.

01

### Easy and intuitive to operate

Because of its small size, the TruPrint 1000 is easy to operate. The generously-sized processing chamber and its doors enable ergonomic handling. Thanks to the intuitive touch screen and the setup wizard operation is very simple. Step by step the operator is active guided through tasks, as the setup of layer zero.

02

### High processing speed thanks to the innovative recoating system

The TruPrint 1000 coordinates powder coating and laser exposure parallel to the components. This reduces downtime to a minimum, enabling higher processing speeds. The tilting recoater component with X-profile enables a robust and equal powder recoating.

03

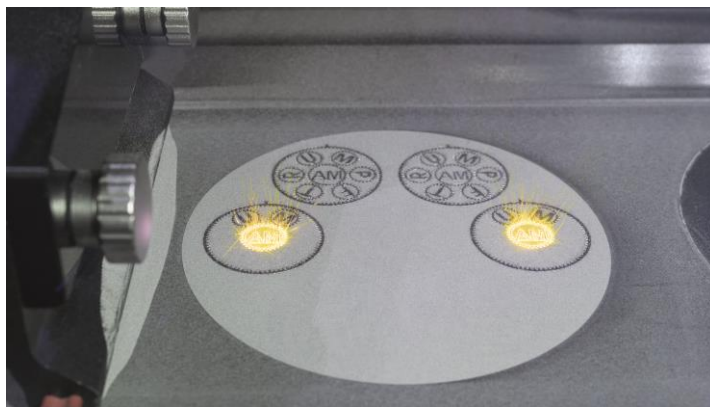
### Mobile operation and monitoring

With the TruTops Fab App you can operate and control the TruPrint 1000 especially flexibly using a tablet. The operator keeps an eye on the production process via live image. With the Powder Bed Monitoring option, you can monitor part quality layer by layer. Our monitoring solutions also provide you a comprehensive monitoring of your machine conditions and a full transparency of your machine productivity.

04

### Maximum productivity

The multilaser option offers a productivity boost of up to 80% compared to the standard machine. At the same utilization rate, the option with 2 x 200 W TRUMPF fiber laser yields a higher part output. The reduced processing time per build job makes a variety of business models possible and enables express production for a quicker part availability.



Maximum productivity with the multilaser option – 2 x 200 W TRUMPF fiber laser simultaneously scan the build area.

05

### Innovative service solutions and international support

TRUMPF Telediagnosics provides a direct connection between our service engineers and your TruPrint 1000. Using the app for Visual Online Support (VOS) you can also exchange picture, sound and video files safe and in real time. This enables more targeted support, and your machine is available again very quickly. Benefit from our worldwide trained service technician network and our 24/7 hour spare parts service.

TruPrint 1000		
Build volume (cylinder)	mm x mm	Ø 100 x H 100 Optional: Smaller build volume
Processible materials <sup>[1]</sup>		Weldable metals in powder form, such as: Stainless steels, tool steels, aluminum <sup>[2]</sup> , nickel-based, cobalt-chrome, copper, titanium <sup>[2]</sup> or precious metal <sup>[2]</sup> alloys
Build rate <sup>[3]</sup>	cm <sup>3</sup> /h	2-18
Layer thickness <sup>[4]</sup>	µm	10-50
Laser source (TRUMPF fiber laser)	W	200 Optional multilaser: 2 x 200 (max. laser power at the workpiece: 175)
Beam diameter	µm	55 Optional: 30
O <sub>2</sub> concentration	ppm	Down to 3000 (0,3%) Optional: down to 100 (0,01%)
Scan speed (powder bed)	m/s	Max. 3
Shielding gas		Nitrogen, argon
Power supply	V / A / Hz	230 – 7 – 50/60
Dimensions (incl. filter)	mm	1445 x 730 x 1680
Weight (incl. filter)	kg	650

<sup>[1]</sup> Current material and parameter availability upon request

<sup>[2]</sup> Available with option packages

<sup>[3]</sup> Dependent on system configuration, process parameters, material and degree of filling

<sup>[4]</sup> Individually adjustable

Subject to alteration. Only specifications in our offer and order confirmation are binding.

TRUMPF Laser- und Systemtechnik GmbH

Johann-Maus-Straße 2 · 71254 Ditzingen · Telephone +49 (0) 7156 303-31620 · Fax +49 (0) 7156 303-931620

E-Mail [additive.manufacturing@de.trumpf.com](mailto:additive.manufacturing@de.trumpf.com) · Homepage [www.trumpf.com/s/additivemanufacturing](http://www.trumpf.com/s/additivemanufacturing)

TAM213st 11/2018

